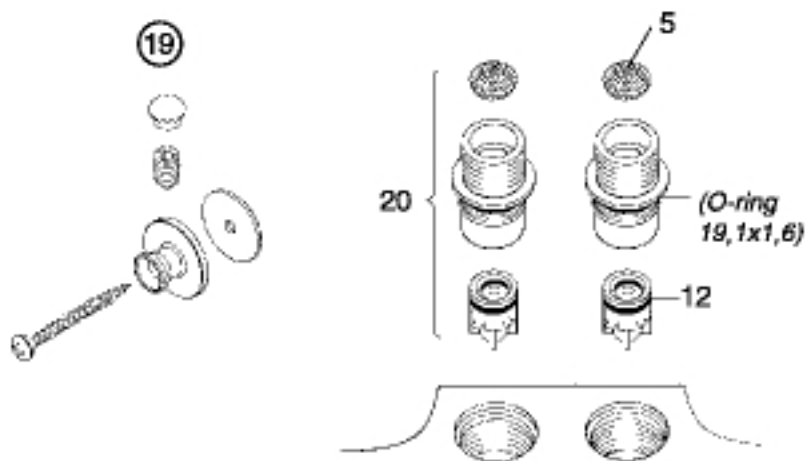


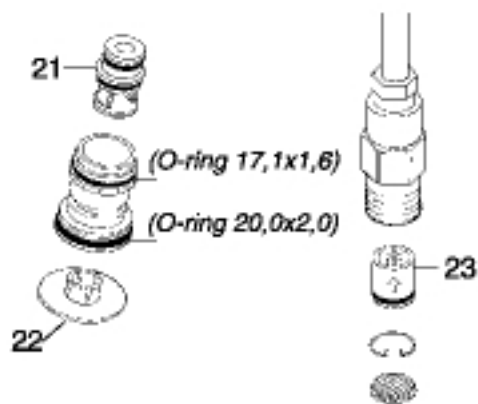
c/c 40 Mixer



Bidet/Basin mixers FMM 9226, (5026), (5029), (5525), (9229)

Automatic diverter

Inlet connector



| No. | Description | FMM No. | EAN code | Pack |
|-----|---------------------------------------------------|-----------|---------------|------|
| 1 | On/Off handle, chrome | 3593-0009 | 7319043593053 | 5 |
| | On/Off handle, anthracite | 3593-0059 | 7319043593046 | 5 |
| 2 | On/Off headwork with valve cone | 3520-1400 | 7319043520059 | |
| 3 | Valve cone (10 pcs) | 3600-1549 | 7319043600034 | 10 |
| 4 | Regulating cartridge | 3860-1009 | 7319043860018 | 10 |
| 5 | Filter kit | 3868-0009 | 7319043868069 | |
| 6 | Sensor unit w. O-ring | 3732-0009 | 7319043732056 | |
| 7 | O-ring kit f. regulating cartridge (10 O-rings) | 3783-0900 | 7319043783027 | |
| 8 | Headwork incl. spindle screw | 3866-0005 | 7319043866027 | |
| 9 | Stop ring, black | 3852-0007 | 7319043852013 | |
| 10 | Temperature handle, chrome | 3594-0009 | 7319043594043 | 5 |
| | Temperature handle, anthracite | 3594-0059 | 7319043594050 | 5 |
| 11 | Inlet connectors 150-153 c/c (left thread) | 5981-0000 | 7319045981018 | |
| | Inlet connectors 160 c/c | 5980-0000 | 7319045980011 | |
| 12 | Non-return valves (Pair) | 2983-0529 | 7319042983169 | |
| 13 | Nipple, M22x1 - G1/2 (Shower mixer) | 3971-0000 | 7319043971042 | |
| 14 | Nipple for spout | 3975-0100 | 7319043975033 | |
| 15 | Locking screw | 3873-0006 | 7319043873018 | |
| 16 | Diverter complete, without locking device, chrome | 3941-2000 | 7319043941281 | |
| 17 | Diverter knob, chrome | 3942-1000 | 7319043942196 | |
| 18 | Aerator M28x1 | 2903-2839 | 7319042903242 | |
| 19 | Wall bracket complete, chrome, f. 40 c/c mixers | 2971-2000 | 7319042971098 | |
| 20 | Inlet connector, 40 c/c mixer | 5982-0000 | 7319045982015 | |
| 21 | Diverter piston | 3773-0007 | 7319043773073 | |
| 22 | Cover lid, chrome | 3869-0000 | 7319043869028 | |
| 23 | Non-return valve (Pair) | 2983-1529 | 7319042983084 | |